



# Preventative Maintenance Guide

## Dansensor MAP Check 3

Technical Support: 01223 492087  
techsupport@tendringpacific.com

**Dansensor Preventative Maintenance Guides help you to care more effectively for your equipment during the time between planned services.**

**For Safety Instructions, Trouble Shooting & Operation - please refer to the User Guide**

### Cleaning and Maintenance

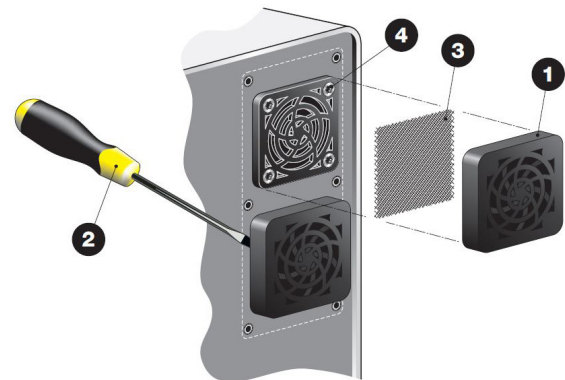
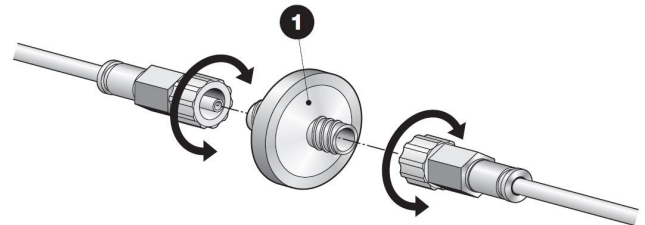
In addition to the Annual Service & Calibration, it is recommended to carry out the following maintenance checks at the interval times stated below.

#### Once a Week:

Water Trap Filter & Fan Filters - Check & Replace (as required)

The water trap filter (1) is located on the sample gas probe at the end furthest away from the MAP Check 3. **During use of the device, dust, debris, and moisture may be sucked through the measuring system.** We recommend that the filter is regularly inspected and replaced, when necessary. To replace the filter, simply unscrew the connection fittings. If the filter is blocked, an error will appear on the display.

Clogged air inlet and outlet filters can lead to overheating of the device, therefore they should be replaced, or cleaned regularly, especially when used in a dusty environment. To replace the filters, release the ventilation grill (1). If the grill does not come off easily, then use a screwdriver (2) to gently release it. The filter (3) is located inside the grill. Either change both parts (1,3), or clean out the filter if in a reusable condition. Do not remove the screws (4) from the inside grill, as they hold the fan in place.



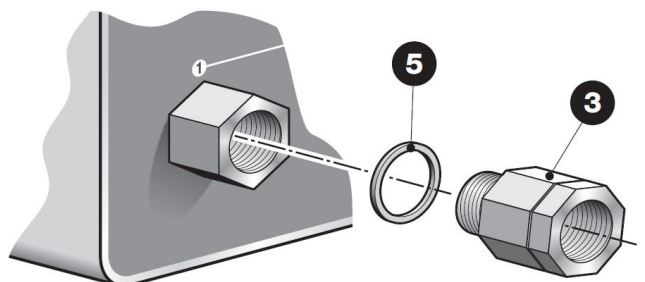
#### Once a Month:

Gas Inlet Filter - Check & Replace (as required)

Gas inlet filters are replaced on annual service and calibration, but could require replacing in extreme cases, such as debris or dirt in the gas.

There are two ways to replace the gas in filter on the MAP Check 3.

1. With the picture as shown, the gas inlet filter (4) screws directly into the pipework going into the unit. Making sure the washer (5) is attached onto the filter. In most cases the inlet filter will screw onto the 3-way pipe and, in others as shown, straight onto the unit. Remove the fittings going onto the inlet filter and then remove the filter from the unit. Replace and attach all pipework and fittings back onto the filter.



To order consumables please contact Claire Duke on 01223 492086 or email [claire.duke@tendringpacific.com](mailto:claire.duke@tendringpacific.com)



# Preventative Maintenance Guide

## Dansensor MAP Check 3

Technical Support: 01223 492087  
techsupport@tendringpacific.com

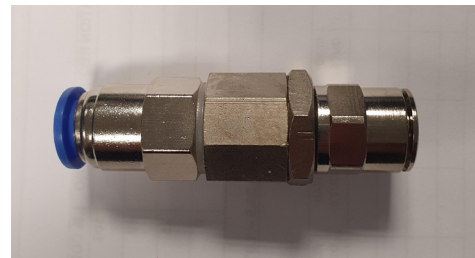
**Dansensor Preventative Maintenance Guides help you to care more effectively for your equipment during the time between planned services.**

**For Safety Instructions, Trouble Shooting & Operation - please refer to the User Guide**

### Cleaning and Maintenance

In addition to the Annual Service & Calibration, it is recommended to carry out the following maintenance checks at the interval times stated below.

2. A quick and easy way to change gas inlet filters for CO<sub>2</sub> and N<sub>2</sub> gases when being used alongside our regulators and 12mm flexi hosing. The hose from the regulator into the unit is cut and the gas inlet filter, as shown, is attached onto both sides of the cut hose. If the unit already has a gas inlet filter attached onto the 12mm flexi hosing, then simply depressurise the hosing and remove and replace with a new kit.



## Dansensor MAP Check 3 Consumable Parts

Filter, measuring gas, 1u yellow (10pcs)	Part No: 210669	Gas Inlet Kit	Part No: Gasinkit
Multiplum filter, fan (10pcs)	Part No: 301093	Sampling kit, on-line, 3m dia3x0,5	Part No: 310619
Multiplum filter, Gas in	Part No: 301092		

To order consumables please contact Claire Duke on 01223 492086 or email [claire.duke@tendringpacific.com](mailto:claire.duke@tendringpacific.com)